

# STAN

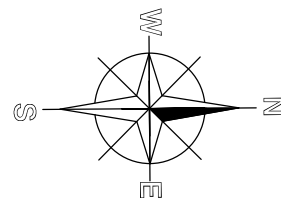
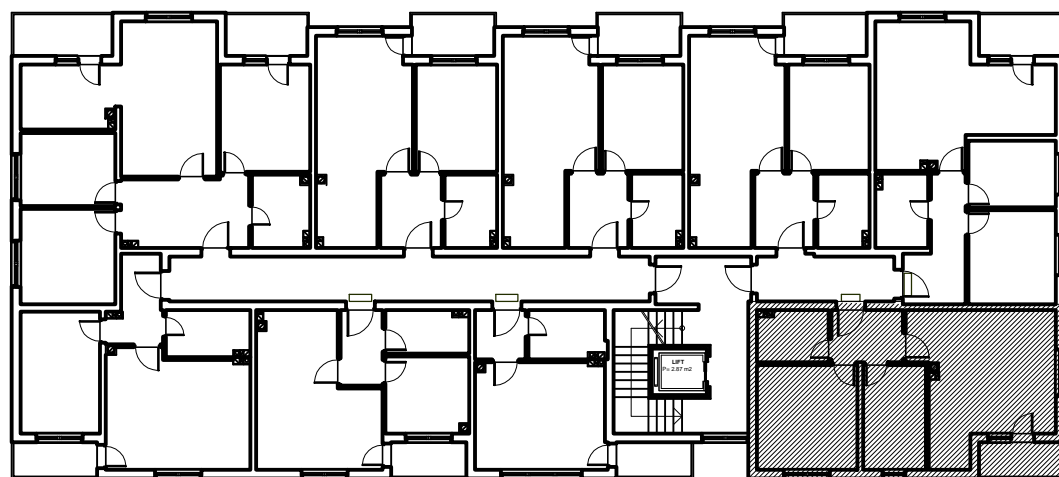
9/1, 18/2, 27/3, 36/4, 45/5

## 52,06 m<sup>2</sup>

### OPIS I POVRŠINE PROSTORIJA

1. DNEVNA SOBA/TRPEZARIJA	parket	17,19 m <sup>2</sup>
2. KUHINJA	ker. pločice	4,75 m <sup>2</sup>
3. SPAVAĆA SOBA	parket	12,19 m <sup>2</sup>
4. SPAVAĆA SOBA	parket	7,59 m <sup>2</sup>
5. HODNIK	ker. pločice	4,31 m <sup>2</sup>
6. KUPATILO/TOALET	ker. pločice	4,19 m <sup>2</sup>
7. TERASA (0,50 koeficijent)	granitna ker.	1,84 m <sup>2</sup>

UKUPNO..... 52,06 m<sup>2</sup>



**STANIŠIĆ d.o.o. Pale,**  
telefon: +387 (57) 22 49 63  
www.stanistic-pale.com.