

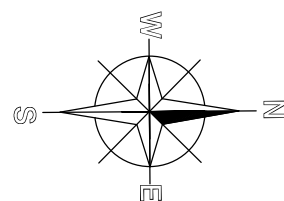
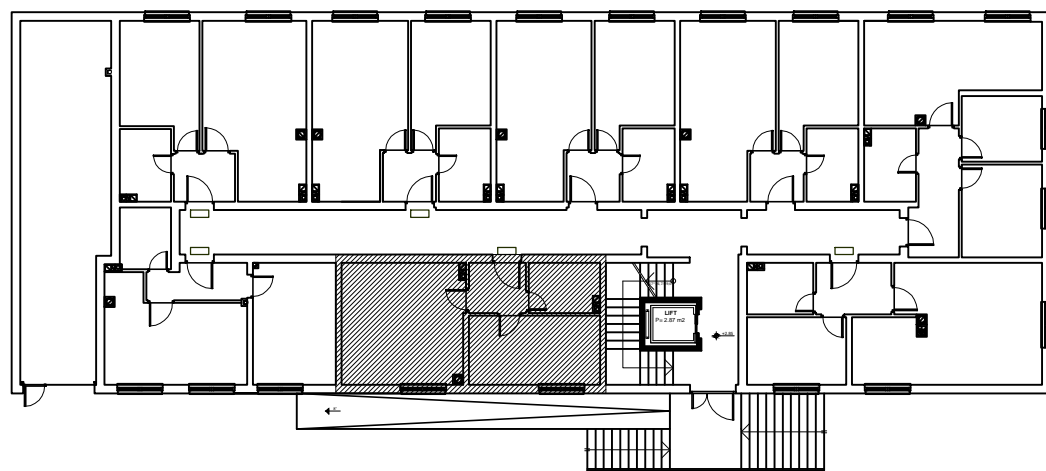
STAN 8

35,71 m²

OPIS I POVRŠINE PROSTORIJA

1. DNEVNA SOBA/TRPEZARIJA	parket	14,58 m ²
2. KUHINJA	ker. pločice	2,92 m ²
3. SPAVAĆA SOBA	parket	10,75 m ²
4. HODNIK	ker. pločice	3,37 m ²
5. KUPATILO/TOALET	ker. pločice	4,09 m ²

UKUPNO..... 35,71 m²



STANIŠIĆ d.o.o. Pale,
telefon: +387 (57) 22 49 63
www.stanistic-pale.com.