

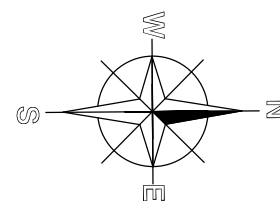
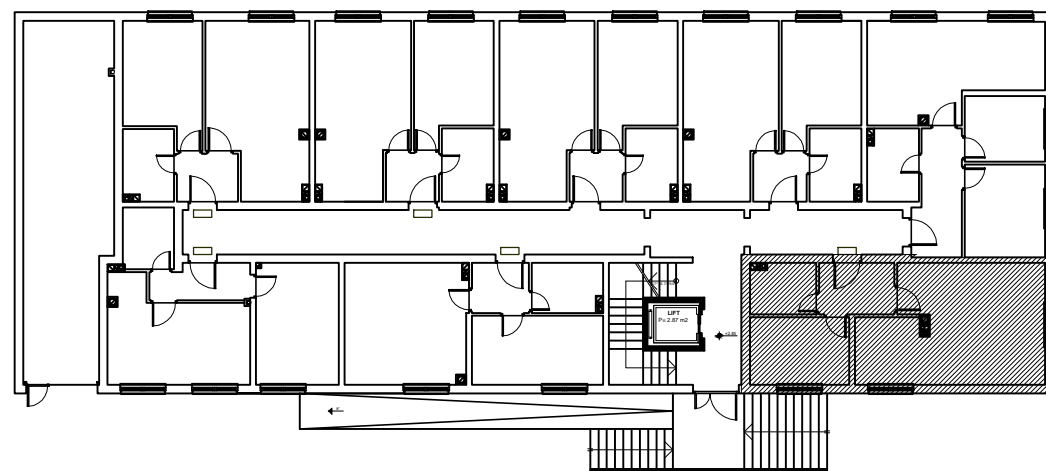
STAN 1

40,93 m²

OPIS I POVRŠINE PROSTORIJA

1. DNEVNA SOBA/TRPEZARIJA	parket	19,29 m ²
2. KUHINJA	ker. pločice	5,19 m ²
3. SPAVAĆA SOBA	parket	7,97 m ²
4. HODNIK	ker. pločice	4,58 m ²
5. KUPATILO/TOALET	ker. pločice	3,90 m ²

UKUPNO..... 40,93 m²



STANIŠIĆ d.o.o. Pale,
telefon: +387 (57) 22 49 63
www.stanistic-pale.com.